



EASY FENCE FORM v3.3

# ALUMINUM PRIVACY FENCE



This is an interactive pdf. Click green headers for links on more information.

1-800-656-4420 • FAX: 1-800-643-7429 • UltraPrivacyFence.com

**A** SELECT ONE:  
 ORDER  QUOTE  
 DATE: \_\_\_\_\_  
 TO SHIP WITH OTHER ORDER(S) AND SAVE ON FREIGHT, CHECK BOX AT RIGHT (MAY DELAY SHIPMENT)

**B** JOB NAME: \_\_\_\_\_  
 PO #: \_\_\_\_\_

**C** BILLING ADDRESS  
 CUSTOMER NAME/ACCT. NO. \_\_\_\_\_ CONTACT: \_\_\_\_\_  
 ADDRESS \_\_\_\_\_ TEL: \_\_\_\_\_ FAX: \_\_\_\_\_  
 CITY, STATE, ZIP \_\_\_\_\_ EMAIL: \_\_\_\_\_

**D** SHIPPING ADDRESS  
 NAME \_\_\_\_\_  
 ADDRESS \_\_\_\_\_  
 (If Different) CITY, STATE, ZIP \_\_\_\_\_

**E** ADD ON?  
 IF THIS ORDER IS INTENDED TO MATCH MATERIAL FROM A PREVIOUS ORDER, PLEASE PROVIDE PREVIOUS ULTRA INVOICE NUMBER: \_\_\_\_\_

**1** RAILS / HEIGHT

2-RAIL }  4'  
           }  5'  
           }  6'

3-RAIL }  7' (DOUBLE STACKED)  
           }  8' (DOUBLE STACKED)

NOTE: 7ft & 8ft high Require 4" Posts

**2** 6' PRIVACY KITS

QTY	
	2-RAIL KIT: Top Rail, Bottom Rail, 5" T&G Panels (14) and 2 Pc Panel Caps.
	3-RAIL KIT: Top Rail, Mid & Bottom Rail, 5" T&G Panels (28) and 2 Pc Panel Caps.

NOTE: Default to Nominal Size and Panel Finished Width Between Posts (70.375")

**3** COLORS

TEXTURED BLACK (TB)  
 TEXTURED BRONZE (TZ)  
 TEXTURED KHAKI (TK)  
 TEXTURED WHITE (TW)

PREMIUM COLOR  
 SILVER (SI) (upcharge)

**4** INDIVIDUAL COMPONENTS

QTY	
	T&G PANEL (5")
	6' PANEL CAPS (2 Pc)
	HAMILTON PRIVACY/TOP RAIL 72.25"
	PRIVACY/BOTTOM RAIL

PLEASE INCLUDE ANY RELEVANT DRAWINGS.

5A POSTS (All Posts are .125 Wall Thickness) NOTE: 7ft & 8ft high Require 4" Posts	Check if FLANGED	SIZE	HEIGHT (See Below)	QUANTITY
Check One: <input type="checkbox"/> LINE <input type="checkbox"/> END <input type="checkbox"/> CORNER <input type="checkbox"/> BLANK	<input type="checkbox"/>	<input type="checkbox"/> 3" <input type="checkbox"/> 4"		
Check One: <input type="checkbox"/> LINE <input type="checkbox"/> END <input type="checkbox"/> CORNER <input type="checkbox"/> BLANK	<input type="checkbox"/>	<input type="checkbox"/> 3" <input type="checkbox"/> 4"		
Check One: <input type="checkbox"/> LINE <input type="checkbox"/> END <input type="checkbox"/> CORNER <input type="checkbox"/> BLANK	<input type="checkbox"/>	<input type="checkbox"/> 3" <input type="checkbox"/> 4"		
Check One: <input type="checkbox"/> LINE <input type="checkbox"/> END <input type="checkbox"/> CORNER <input type="checkbox"/> BLANK	<input type="checkbox"/>	<input type="checkbox"/> 3" <input type="checkbox"/> 4"		

Standard Post Heights: 84", 96", 108", 120" or 132". Flanged Post Heights: 51", 63", 75", 87" or 97.625".  
 All Posts are Routed Except Blanks. Line, End and Corner Posts Include Caps and Screws (Blanks have Caps Only).  
 Flanged Posts are .500" and Include Flange Cover Kit. Offset Flanged Sizes Posts are Available in All Sizes - Call for More Information.

5B STEEL POSTS (.125 Wall Thickness)	Check if FLANGED	SIZE	HEIGHT (See Below)	QUANTITY
	<input type="checkbox"/>	<input type="checkbox"/> 4" <input type="checkbox"/> 6"		

Steel Post Heights: 72", 84", 96", 108", 120", 132", or 144". Flanged Steel Post Heights: 51", 63", 75", 87" or 97.625".  
 Steel Posts are ASTM Grade A500. Flanged Posts are .500" and Include Flange Cover Kit.

6A GATES (All with 3" U-Frame Pre-Assembled and Welded)	HEIGHT (If Different than #1)	OPENING SIZE (See Below)	OTHER INFO.	QUANTITY
Check One: <input type="checkbox"/> SINGLE GATE <input type="checkbox"/> DOUBLE GATE				
Check One: <input type="checkbox"/> SINGLE GATE <input type="checkbox"/> DOUBLE GATE				
Check One: <input type="checkbox"/> SINGLE GATE <input type="checkbox"/> DOUBLE GATE				

Single Gate Openings: 37-7/8", 42-7/8", 47-7/8", 52-7/8", 57-7/8", 62-7/8", 67-7/8" or 72-7/8".  
 Double Gate Openings: 75", 85", 95", 105", 115", 125", 135" or 145". Custom Heights/Widths are Available with Limitations - Call Ultra.

6B HINGE OPTIONS (Sold Separately)		6C LATCH OPTIONS (Sold Separately)	
QTY		QTY	
	LOCINOX HINGE (Pair) (Default)		LOKKLATCH DELUXE with EAK
	TRUCLOSE HEAVY DUTY (Pair)		MAGNALATCH (Pool Code Approved)
	ULTRA WELDED HINGE (Pair)		LOKKLATCH MAGNETIC
			BASIC LOKKLATCH
			24" DROP ROD with Dual Guides

7 BRACKETS	QTY
	**UNIVERSAL BOTTOM (2 Pc) with Screws
	**HORIZONTAL UNIVERSAL BOTTOM (1 Ea) with Screws
	***HAMILTON HORIZONTAL with Base & Screws
	***VERTICAL UNIVERSAL BOTTOM (1 Ea) with Screws
	***HAMILTON VERTICAL with Base & Screws
	PRIVACY SUPPORT BRACKET (2 Pk)

\*\* Requires Field Notching of Privacy Board Panels.  
 \*\*\*Vertical Adjustments Require Field Notching of the Privacy Board Panels as well as Custom Skew Cut Boards.

8 MISCELLANEOUS	QTY	ADDITIONAL ITEMS	QTY

**9** SPECIAL INSTRUCTIONS

Print page 1 and fax us.  
 Or, save page 1 and email us.



\_\_\_\_\_

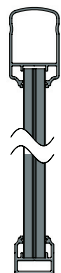


# #1 RAILS / HEIGHT

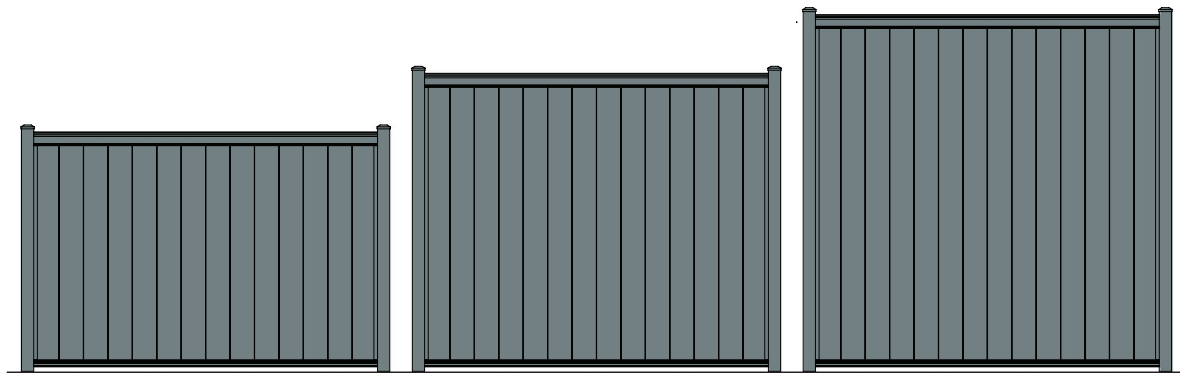
CLICK ANY CHECKBOX TO POPULATE FORM

Ultra's Aluminum Privacy Fence is Available in Standard 2-Rail or Double Stacked 3-Rail.

## 2-RAIL:



UAE-200  
Privacy Fence

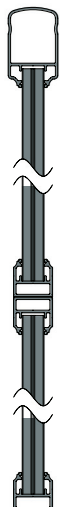


4' (Height) Privacy Panel

5' (Height) Privacy Panel

6' (Height) Privacy Panel

## 3-RAIL:



UAE-DS  
Privacy Fence



7' (Height) Double Stacked  
Privacy Panel

8' (Height) Double Stacked  
Privacy Panel

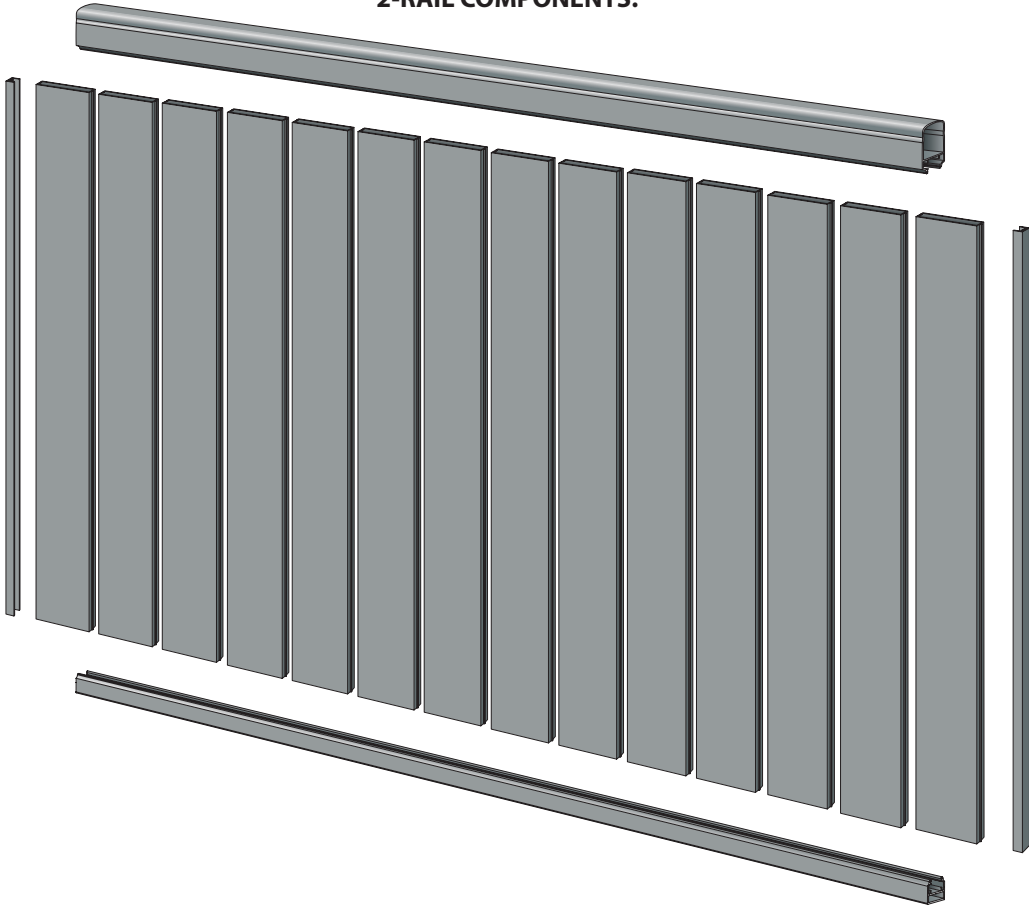
[BACK TO FORM](#)

# #2 6' PRIVACY KITS

All Panels are 6' Wide. NOTE: Default to Nominal Size and Panel Finished Width Between Posts (70.375")  
Ultra Privacy Panels are made of all Aluminum.

2-Rail Includes: Top Rail (Hamilton Profile), Bottom Rail, 3/4" x 5" x .080 T&G Panels (14) and 2 Piece Panel Caps (2).  
Approximate weight is 99 lbs./6' x 6' section.

### 2-RAIL COMPONENTS:

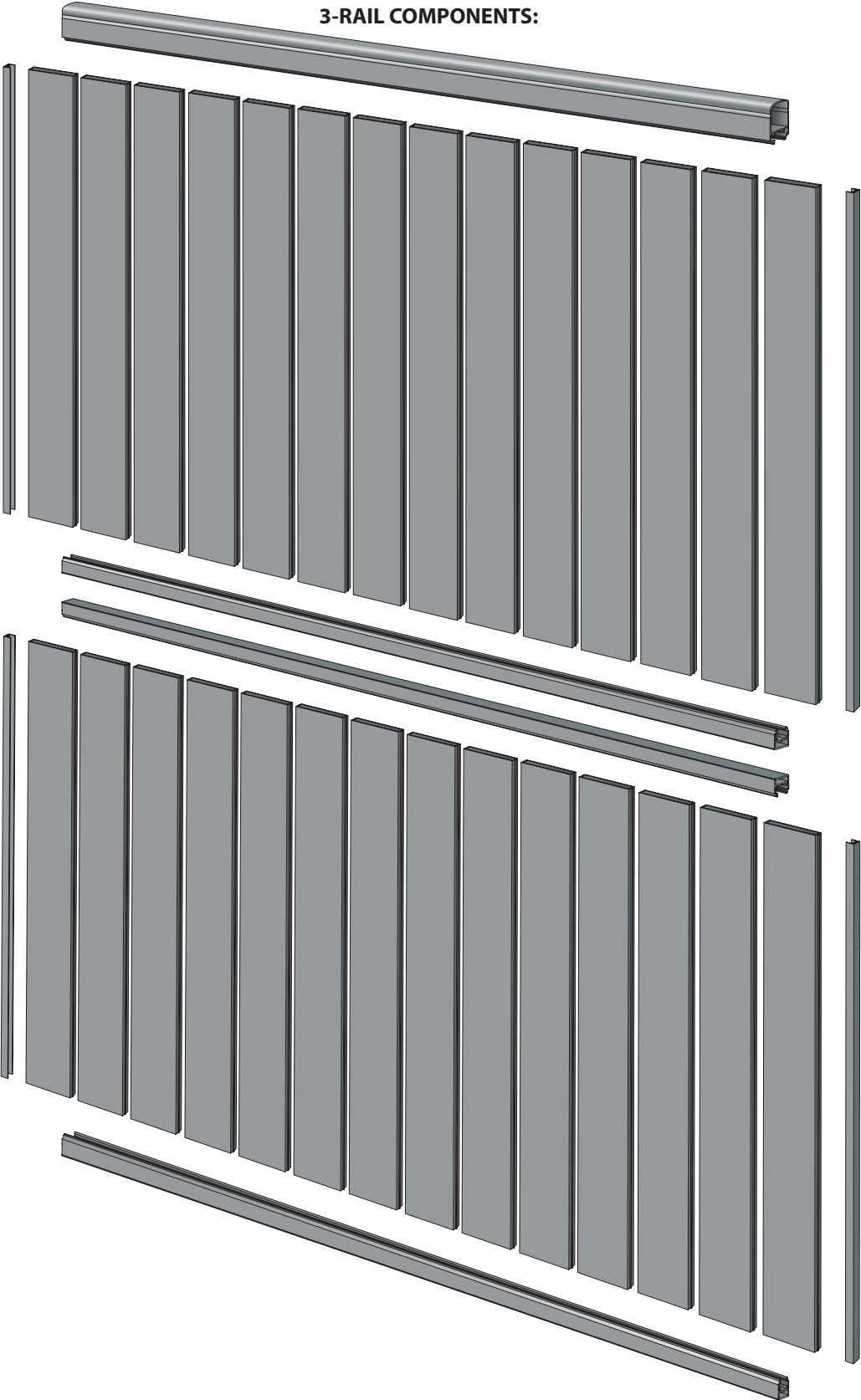


# #2 6' PRIVACY KITS

All Panels are 6' Wide. NOTE: Default to Nominal Size and Panel Finished Width Between Posts (70.375")  
Ultra Privacy Panels are made of all Aluminum.

3-Rail Includes: Top Rail (Hamiton Profile), Mid Rail, Bottom Rail, 3/4" x 5" x .080 T&G Panels (28)  
and 2 Pc Panel Caps (4).

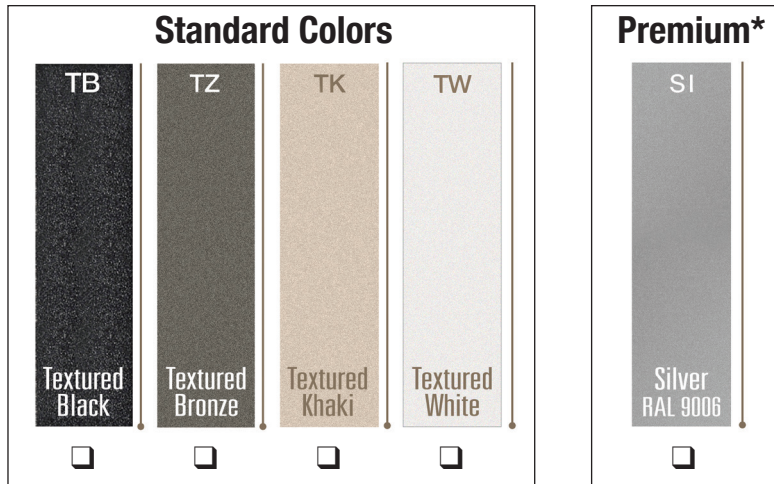
### 3-RAIL COMPONENTS:



[BACK TO FORM](#)

## #3 COLORS

CLICK ANY CHECKBOX TO POPULATE FORM



Colors shown represent an approximate comparison and may vary slightly from actual product color.

*(\*Silver is available at an extra charge and will require additional lead times.*

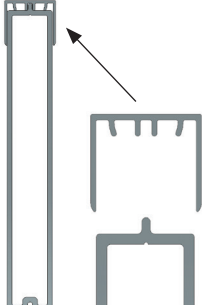
*Ask your Ultra Representative for details.)*

[BACK TO FORM](#)

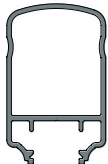
#4 INDIVIDUAL COMPONENTS



Aluminum Privacy  
T&G Panel (5")



6' Panel Caps (2 Pc)  
67.875"



Hamilton Privacy  
Top Rail - 72.25"

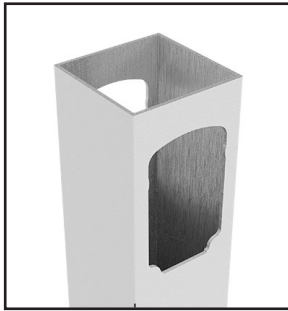


Privacy Bottom  
Rail - 72.25"

[BACK TO FORM](#)

# #5A POSTS

All Posts are .125 Wall Thickness and Available in 3" and 4"  
NOTE: 7' and 8' High Require 4" Posts  
Posts Include Caps and Screws (Blanks have Caps Only).



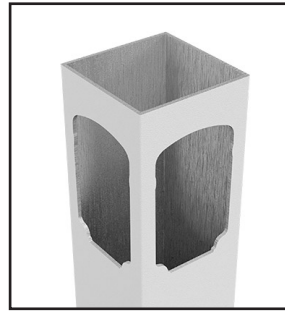
**Line:**

2-Rail routed (3-Rail routed for Double Stacked) on 2 opposite sides of the post



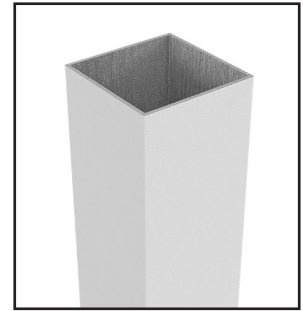
**End:**

2-Rail routed (3-Rail routed for Double Stacked) on 1 side of the post



**Corner:**

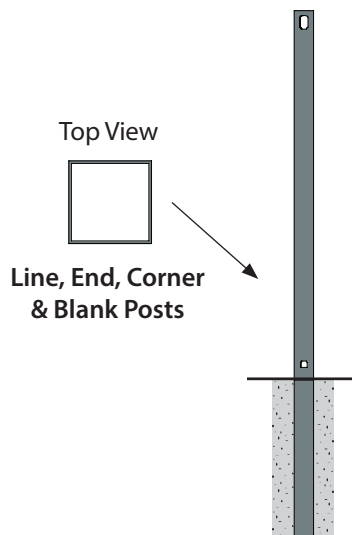
2-Rail routed (3-Rail routed for Double Stacked) on 2 adjacent sides of the post



**Blank:**

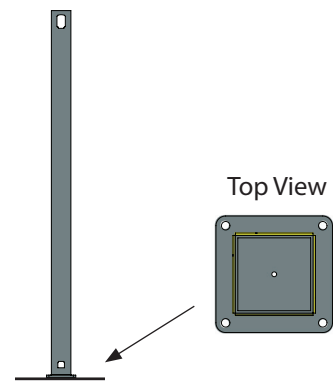
Used for angles and stairs. NO Routing.

## STANDARD POST



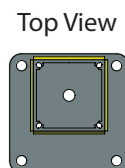
Line, End, Corner & Blank Posts

## FLANGED POST



Flanged Posts are .500" and Include Flange Cover Kit.

## OFFSET FLANGED POST



Offset Flanged Posts are Available in All Sizes - Call for More Information.



## #5A POSTS: Includes Square Cap and Screws (Blanks with Cap Only)

### AVAILABLE HEIGHTS:

*Consider frost conditions when selecting length of posts.*

#### STANDARD: 3" x 3" and 4" x 4"

Privacy Panel/Gate Height	Post Height	Post Thickness
4'	84" long	.125 Wall
5'	96" long	.125 Wall
6'	108" long	.125 Wall
7'	120" long	.125 Wall
8'	132" long	.125 Wall

#### FLANGED: 3" x 3" and 4" x 4"

Privacy Panel/Gate Height	Post Height	Post Thickness
4'	51" long	.125 Wall
5'	63" long	.125 Wall
6'	75" long	.125 Wall
7'	87" long	.125 Wall
8'	97.625" long	.125 Wall

[BACK TO FORM](#)

## #5B STEEL POSTS

**ASTM Grade A500 Steel with Industry Leading Zinc Rich Prime Coat for Long Term Protection  
Along with Ultra's Exclusive "Powercoat" Color Finish.  
Standard Steel Posts Include Cap and Screws. Flanged Steel Posts Include Cap and Flange Cover.**

### AVAILABLE HEIGHTS:

*Consider frost conditions when selecting length of posts.*

#### STANDARD: 4" x 4" and 6" x 6"

Privacy Panel/Gate Height	Post Height	Post Thickness
3'	72" long	.125 Wall
4'	84" long	.125 Wall
5'	96" long	.125 Wall
6'	108" long	.125 Wall
7'	120" long	.125 Wall
8'	132" long	.125 Wall
8'	144" long	.125 Wall

#### FLANGED: 4" x 4" and 6" x 6"

Privacy Panel/Gate Height	Post Height	Post Thickness
4'	51" long	.125 Wall
5'	63" long	.125 Wall
6'	75" long	.125 Wall
7'	87" long	.125 Wall
8'	97.625" long	.125 Wall

[BACK TO FORM](#)



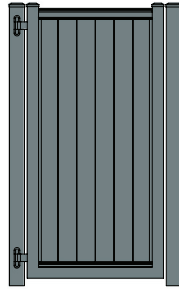
## #6A GATES

**NOTE: Gate Height will match Box 2 Unless Noted.  
All Gate Hardware Sold Separately.**

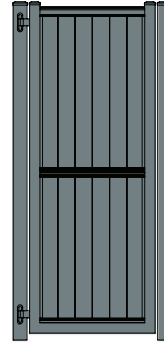
**Gates are Pre-Assembled and Welded. Gate made with 3" U-Frames for Additional Strength.**

- Custom Widths and Heights are Available with Limitations.
- Call your Ultra Representative for More Details.

### SINGLE GATES



Standard



Double Stacked

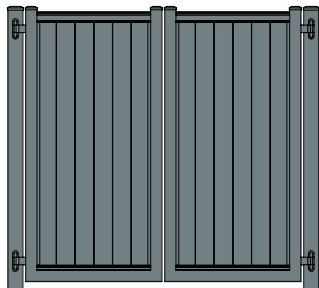
Single Gate Opening Size	Actual Gate Leaf Size U-Frame Width	Top Cap and Rails	Privacy Panels
37-7/8"	36-3/8"	36-1/8"	6
42-7/8"	41-3/8"	41-1/8"	7
47-7/8"	46-3/8"	46-1/8"	8
52-7/8"	51-3/8"	51-1/8"	9
57-7/8"	56-3/8"	56-1/8"	10
62-7/8"	61-3/8"	61-1/8"	11
67-7/8"	66-3/8"	66-1/8"	12
72-7/8"	71-3/8"	71-1/8"	13

**Disclaimer Note:** Ultra will not sell any railing/fencing product for commercial use unless it has been tested by a third party licensed facility or calculated for performance and installation by a licensed engineer.



# #6A GATES

## DOUBLE GATES



Standard



Double Stacked

Double Gate Opening Size	Actual Gate Leaf Size U-Frame Width	Top Cap and Rails	Privacy Panels
75"	36-3/8"	36-1/8"	12
85"	41-3/8"	41-1/8"	14
95"	46-3/8"	46-1/8"	16
105"	51-3/8"	51-1/8"	18
115"	56-3/8"	56-1/8"	20
125"	61-3/8"	61-1/8"	22
135"	66-3/8"	66-1/8"	24
145"	71-3/8"	71-1/8"	26

**Disclaimer Note:** Ultra will not sell any railing/fencing product for commercial use unless it has been tested by a third party licensed facility or calculated for performance and installation by a licensed engineer.

[BACK TO FORM](#)

# #6B GATES: HINGES & LATCHES

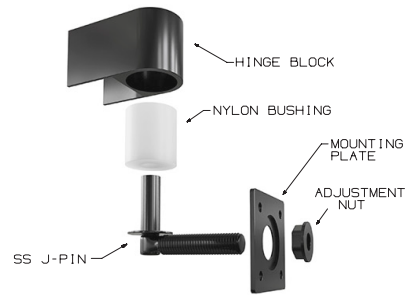
All Gate Hardware Sold Separately.



**TruClose Heavy Duty**  
(Rated up to 150 lbs.)  
(SOLD AS A PAIR)



**180 Degree Stainless Steel Locinox Hinge w/Bracket - DEFAULT HINGE.**  
(SOLD AS A PAIR)



**Ultra Welded Hinge**  
(SOLD AS A PAIR)

## LATCH OPTIONS:



**Lokklatch Deluxe with EAK**



**MagnaLatch**  
(Pool Code Approved)



**Lokklatch Magnetic**



**Basic Lokklatch**



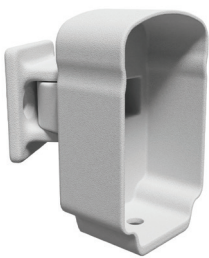
**Drop Rod with Guides**

[BACK TO FORM](#)

## #7 BRACKETS

**\*\*Use of Bracket Connections Require Field Notching of Privacy Board Panels.**

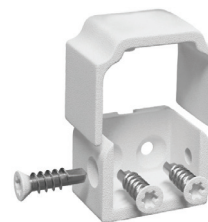
**\*\*\*Use of Vertical Brackets for Vertical Adjustments Require Field Notching of the Privacy Board Panels as well as Custom Skew Cut Boards. Contact your Ultra Sales Representative for Specific Information.**



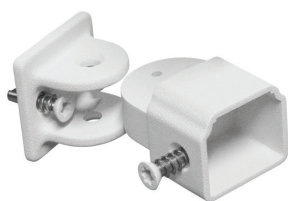
**\*\* Rail End Hamilton Horizontal Bracket w/Base & Screws**



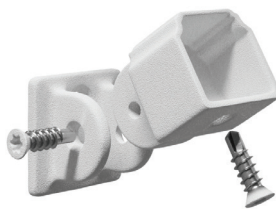
**\*\*\* Rail End Hamilton Vertical Bracket w/Base & Screws**



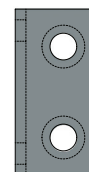
**\*\* Bracket (2 pc) Universal Bottom w/Screws**



**\*\* Rail End Horizontal Universal Bottom - 1 Each w/Screws**



**\*\*\* Rail End Vertical Universal Bottom - 1 Each w/Screws**



**Privacy Support Bracket - 2 pack with Screws**

[BACK TO FORM](#)

## #8 MISCELLANEOUS



**Paint (11oz. Spray Can)**



**Screws: #8 x 2" Hex Head 410 or #8 x 1-1/2" Hex Head 410 (Same Color as Box 3)**



**Panic Bar**

[BACK TO FORM](#)